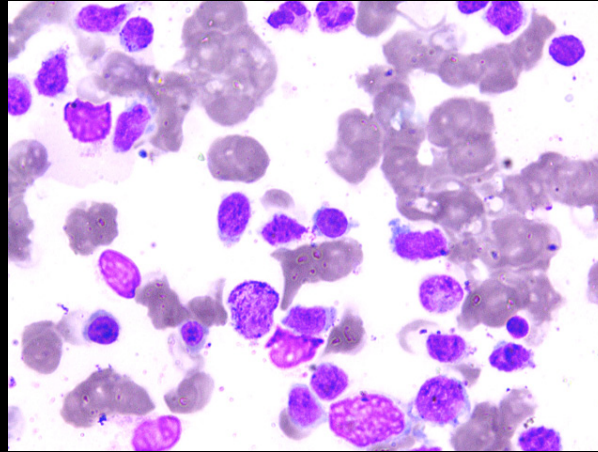


Peripheral smear, 400 X



Peripheral smear, 400 X

FLOW CYTOMETRY FINDINGS:

Flow cytometry was performed on bone marrow sample which revealed a CD3 positive, CD5 negative, CD8 negative T cell neoplasm. Atypical lymphoid cells expressed CD3, CD7, CD2, CD38, cytoplasmic CD3, CD16 and gamma delta T cell receptor, and were negative for Alpha beta T cell receptor, CD5, CD4, CD8, CD56, CD1a and CD99.

Findings on flow cytometry were suggestive of Hepatosplenic gamma delta T cell lymphoma.