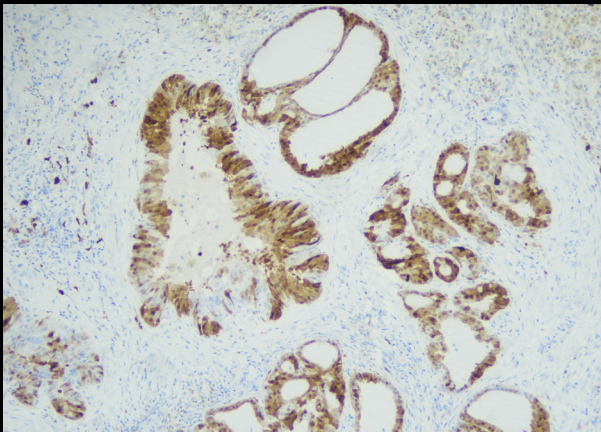
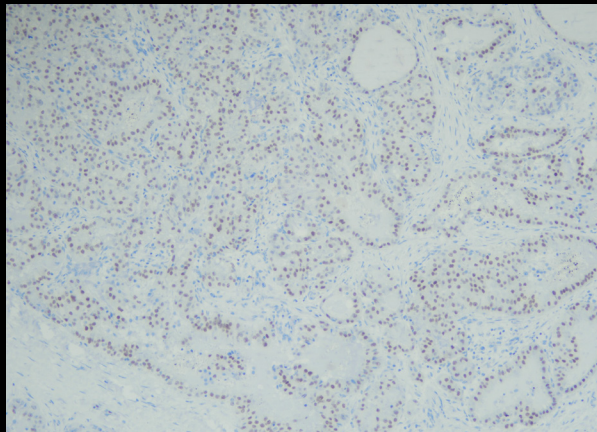


**IHC:**

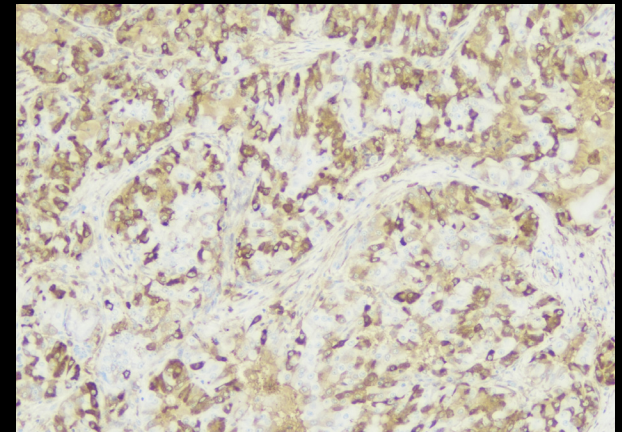
On IHC tumor cells showed diffuse strong immunoreactivity with S-100, SOX-10 and Mammaglobin while being non-immunoreactive for DOG-1. Staining for p63 showed cytoplasmic positivity (a finding peculiar to this tumor).<sup>4</sup> IHC for PanTRK showed diffuse strong immunoreactivity (Fig 4 - 8).



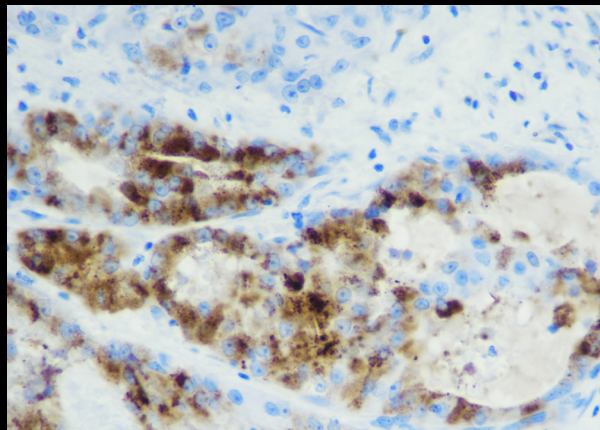
(Fig 4 s100)



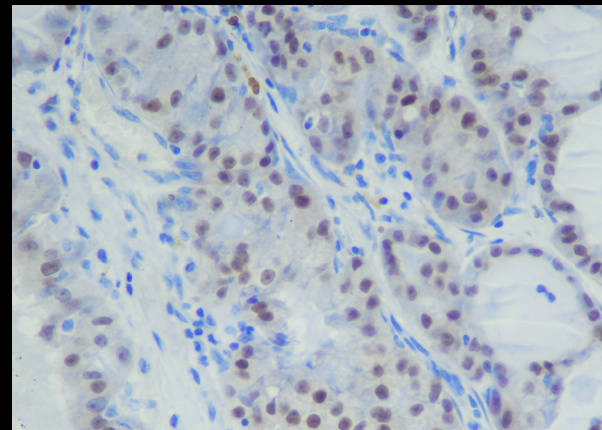
(Fig 5 sox10)



(Fig 6 mammaglobin)



(Fig 7 p63 b)



(Fig 8: PanTRK)