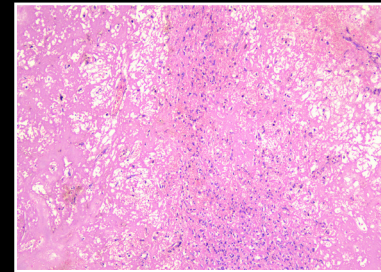
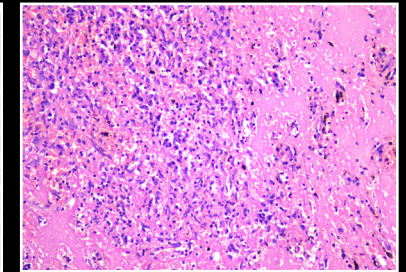


HISTOMORPHOLOGY

Multiple sections examined from the mass showed multiple angiomatous nodules in a radiating pattern with a central stellate fibrous scar. The multinodular mass was composed of vascular spaces of varying caliber lined by plump endothelial cells that were round, slit-like or irregular in outline. These vascular nodules were surrounded by sclerotic stroma containing fibroblasts with focal areas of myxoid change. Dispersed lymphocytes, plasma cells, macrophages and numerous red cells were seen. No nuclear atypia, mitoses, and necrosis were evident.



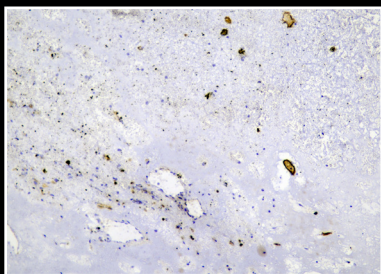
H&E



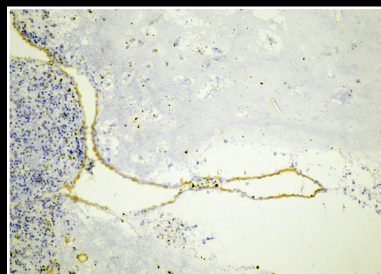
H&E

IMMUNOHISTOCHEMISTRY

On immunohistochemical evaluation three types of blood vessels were identified. CD34+/CD8-/CD31+ well formed cord capillaries in an organized lobular arrangement, CD34-/CD8-/CD31+ small veins arranged in an intricate mesh like pattern, and CD34-/CD8+/CD31+ in sinusoids of the spleen. Dispersed macrophages were CD68 positive.



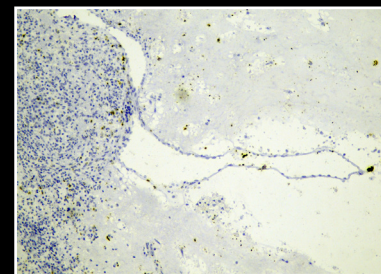
CD34



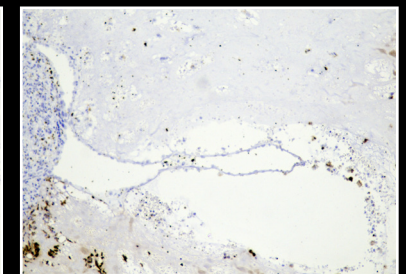
CD34



CD31



D240



CD68