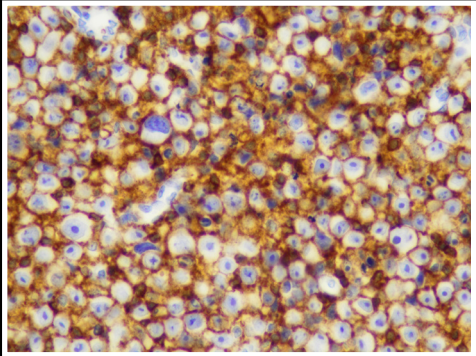
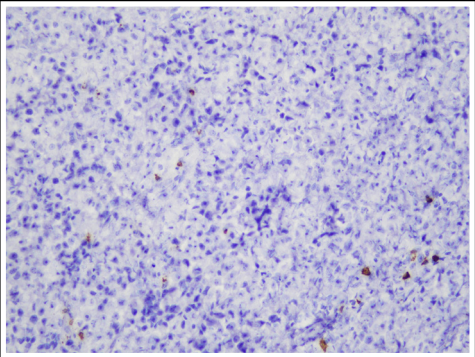


**IMMUNOHISTOCHEMISTRY**

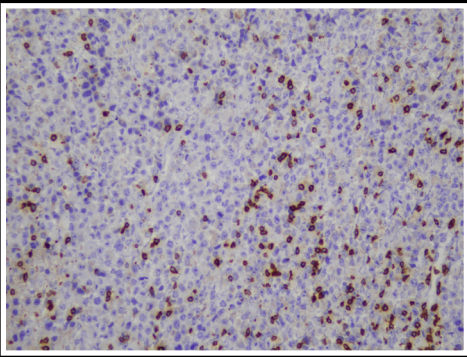
These neoplastic cells were positive for CD45 (strong and diffuse), CD79a and Pax5 (weak and focal), ALK (strong and diffuse), CD138 (strong and diffuse), CD4 (weak and focal), BCL6 (weak and focal) with Ki67 proliferation index of 80%. These neoplastic cells were negative for PanCK, HMB45, CD56, CD34, CD20, CD3, CD5, CD8, BCL2, CD30, CD7, CD43, and MPO.



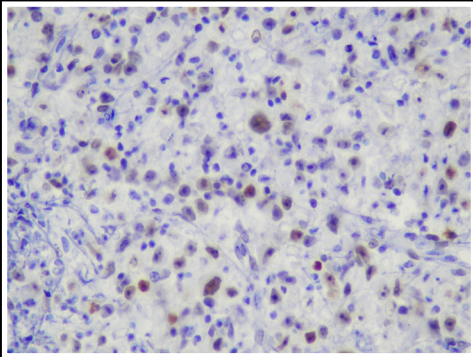
CD45; 400x



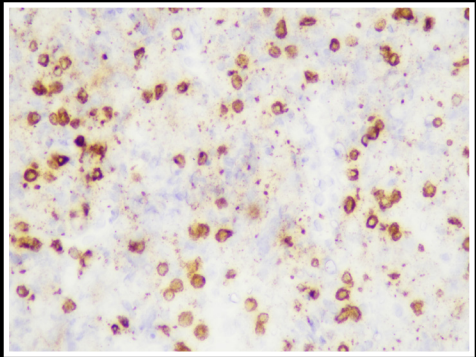
CD20; 200x



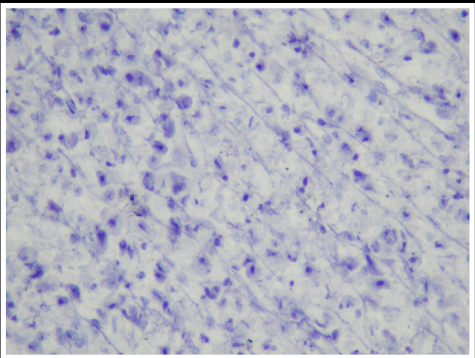
CD3; 200x



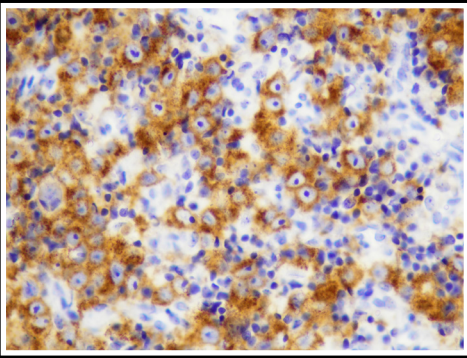
PAX5; 400x



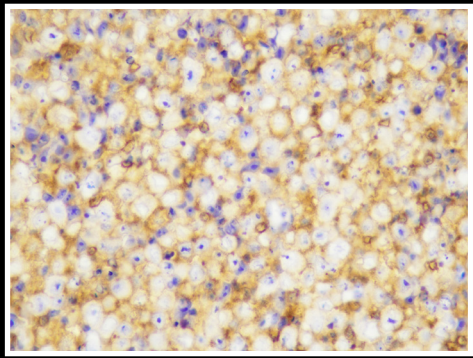
CD79a; 400x



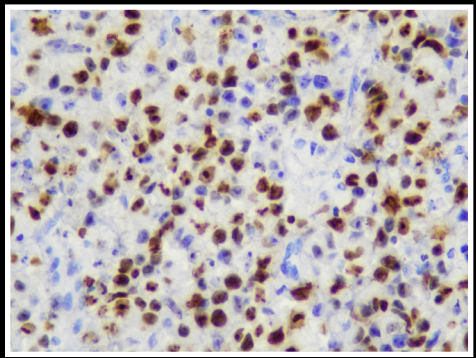
CD30; 400x



ALK; 400x



CD4; 400x



Ki67; 400x