

CASE 027

AUTHORS: Shivani Sharma, M. Murthy, Shipra Garg, Samriti Arora, Naveen Aggarwal

ACKNOWLEDGEMENT: Vandana Sharma, Arjun Singh Rana, Saurabh Singh

Anaplastic lymphoma kinase-positive large B Cell lymphoma: An aggressive yet under-recognized entity.

CASE HISTORY

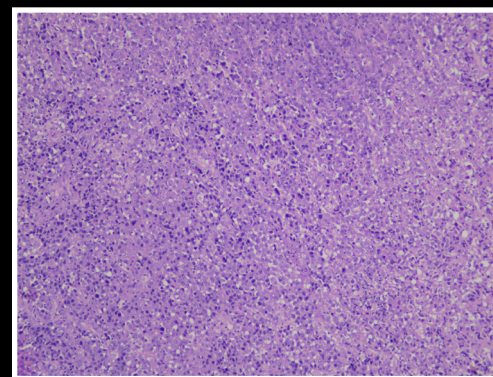
32 year male patient presented to the outpatient department with chief complaints of swelling in the cervical region. The cervical lymph node was excised and we received a paraffin block from cervical lymph node for review and immunohistochemistry.

HISTOMORPHOLOGY

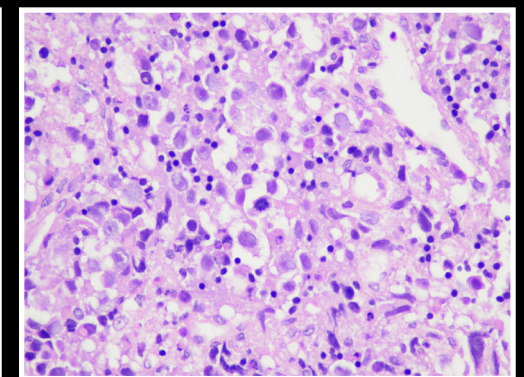
H and E stained section showed solid sheets of atypical monomorphic intermediate to large sized lymphoid cells that had round to oval nuclei with dispersed chromatin and prominent nucleoli. The cells had moderate to scant amount of amphophilic cytoplasm. Mitosis was brisk.

DIFFERENTIAL DIAGNOSIS

Based on the histomorphologic evaluation, the differential diagnosis considered were Non Hodgkin lymphoma and poorly differentiated carcinoma. Accordingly, an extensive immunohistochemistry panel was performed.



H and E; 100x



H and E; 400x