

Figure 1

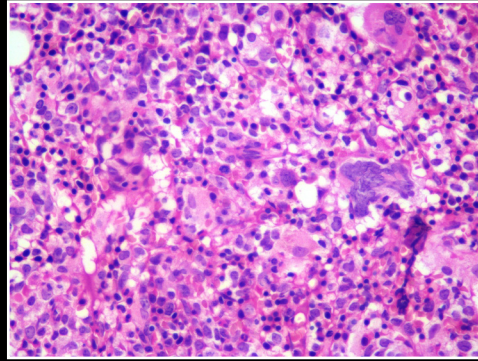


Figure 2

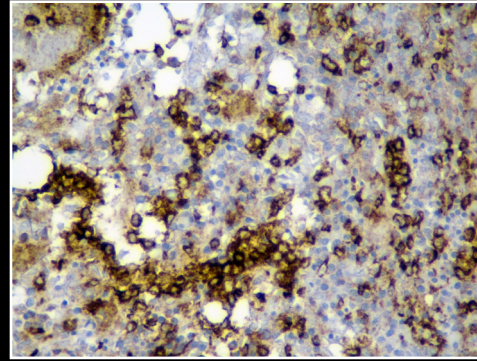


Figure 3

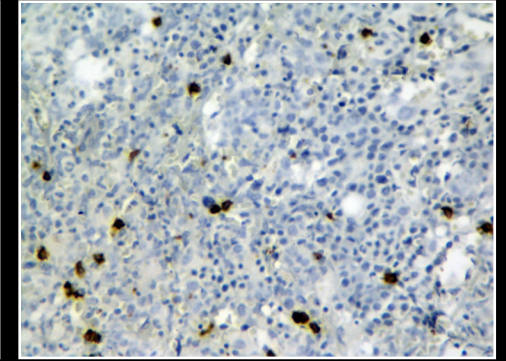


Figure 4

DIFFERENTIAL DIAGNOSIS

Based on the clinical features and findings on peripheral blood and bone marrow aspirate examination, the diagnosis of lymphomatous involvement of the marrow was rendered, with an advice of immunophenotyping for further characterization and final opinion.

IMMUNOPHENOTYPING BY FLOWCYTOMETRY

Immunophenotype analysis was done on CD45 vs side scatter gating, which highlighted a population comprising of 46.3% events which expressed bright positivity for CD45. There were approximately 31% CD3 positive T cells which showed dim positivity for CD7 with negative CD5, CD4 and CD8. T cell receptor (TCR) γ - δ was positive with negative TCR α - β . These cells showed moderate CD16 with negative CD56 & CD57 (Figure 5).