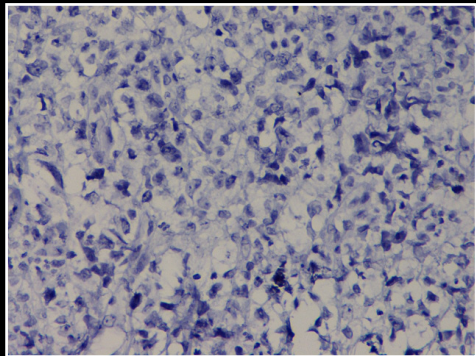


DIFFERENTIAL DIAGNOSIS

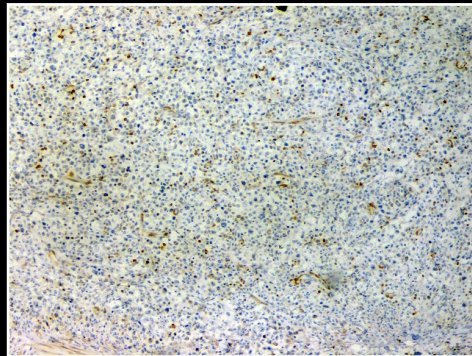
On histomorphology, a diagnosis of primary cutaneous lymphoma was considered with mycosis fungoides vs primary cutaneous anaplastic large cell lymphoma being the most probable differentials. In light of absent lymphadenopathy, no history of spontaneous resolution or recurrence and absent epidermotropism on histomorphology, lymphomatoid papulosis and primary cutaneous aggressive epidermotropic CD8+ cytotoxic T-cell lymphoma were considered as distant differentials.

IMMUNOHISTOCHEMISTRY

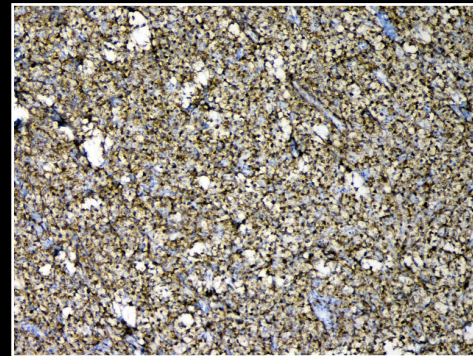
The atypical lymphoid cells stained positive for CD45, CD3, CD2, CD30, CD 8 and CD7. There was loss of expression of CD5 and CD4. Ki67 proliferation index was upto 80%. The cells were immunonegative for ALK and EMA.



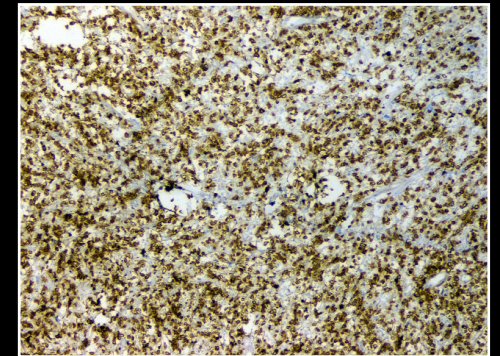
ALK



BCL2



CD2



CD3