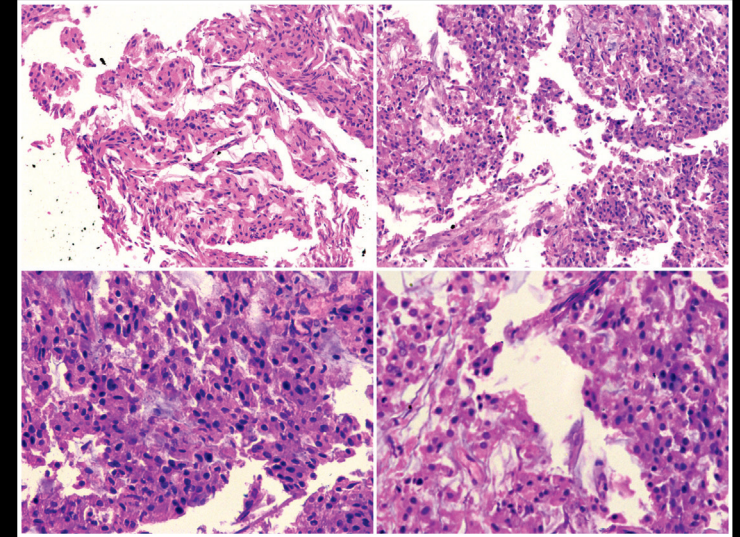


HISTOMORPHOLOGY

H and E stained section showed an epithelial-looking cellular neoplasm arranged in the form of papillae and solid areas. The papillae were masked by crushed and cautery artifacts. The nuclei are round to oval with stippled chromatin. Pleomorphic nuclei are seen focally. Mitotic index was 1-3 per high power fields. No necrosis or microvascular proliferation was seen.



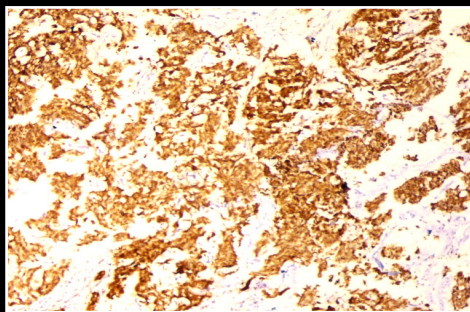
H&E

DIFFERENTIAL DIAGNOSIS

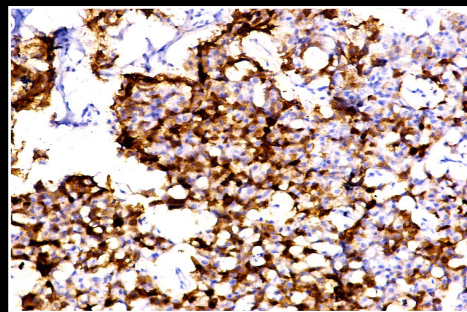
On histomorphology the differential diagnosis that were considered were papillary tumor of pineal region (PTPR), pineocytoma, choroid plexus papilloma, metastatic carcinoma, and papillary ependymoma. Accordingly, an extensive immunohistochemistry panel was performed.

IMMUNOHISTOCHEMISTRY

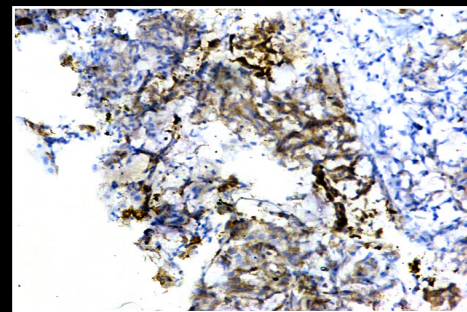
The tumor cells were diffusely positive for PanCK and focally positive for EMA, synaptophysin and NSE. GFAP, vimentin, CK7, CK20, CD56, and Oct3/4 were negative in the tumor cells. The Ki67 proliferation index was 5%.



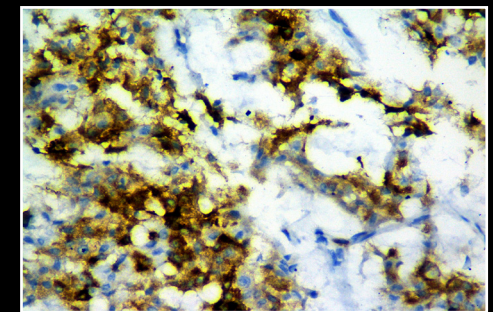
PanCK



EMA



NSE



Synapto