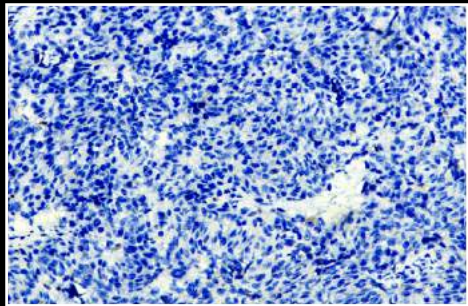


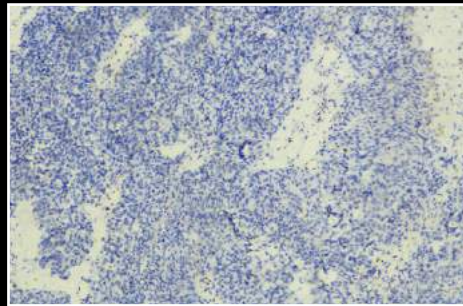
cytoplasm. Many cells showed intracytoplasmic melanin pigment. Mitosis index was 2/10 HPF. No necrosis was identified.

IMMUNOHISTOCHEMICAL FINDINGS

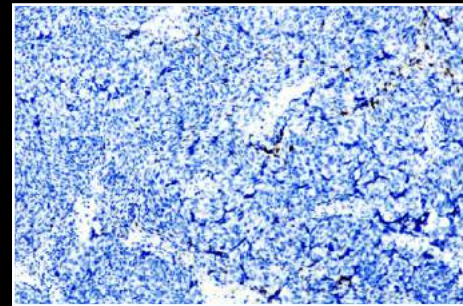
Immunohistochemically, the tumor cells were positive for Vimentin, S-100, HMB-45, Melan A and negative for EMA, GFAP, Synaptophysin, Fli-1 and PR with a Ki-67 proliferation index of 60%. Thus, a final diagnosis of Malignant melanoma was rendered. In correlation with the



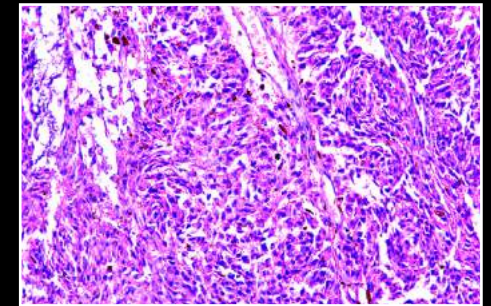
EMA



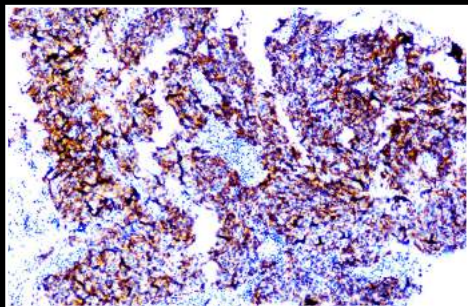
FLI-1



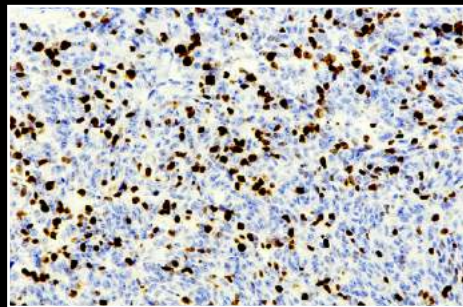
GFAP



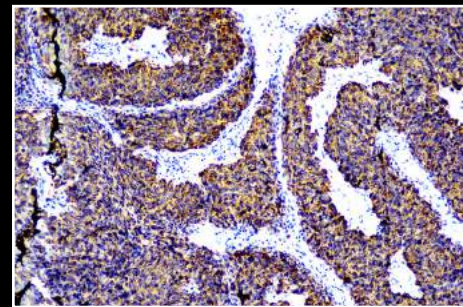
H&E



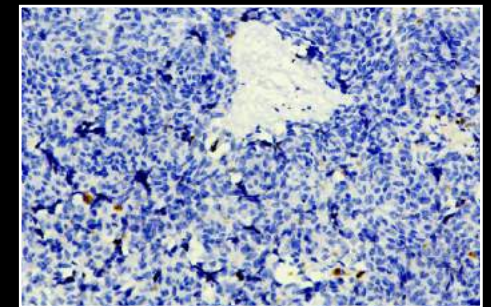
HMB45



Ki-67



Melan A



Pan CK