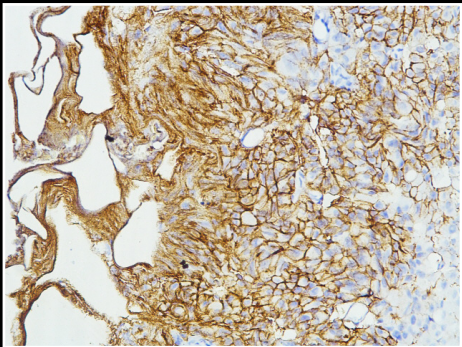


HISTOPATHOLOGICAL FINDINGS

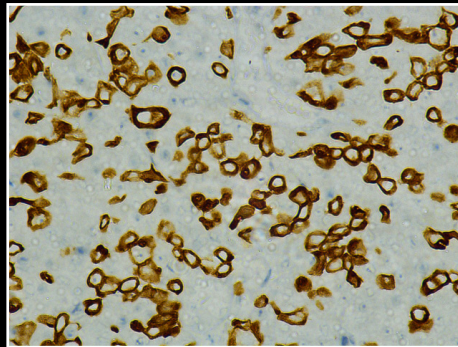
Haematoxylin and Eosin stained section showed infiltration of the bladder wall by a tumor arranged in diffuse sheets, nests as well as in single cell files and cords. Individual cells displayed mild to moderate nuclear pleomorphism with polygonal cell outlines, round to oval eccentric nuclei with vesicular chromatin, inconspicuous nucleoli and moderate amount of eosinophilic cytoplasm with intracytoplasmic vacuolation at some foci. The tumor cells were seen to infiltrate the lamina and the muscularis propria. Surrounding stroma showed focal myxoid change and retraction artifacts.

IMMUNOHISTOCHEMICAL FINDINGS

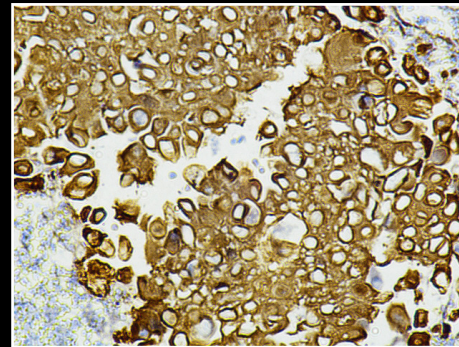
Immunohistochemically, the tumor cells were positive for CK7, CK20, EMA, CD 138, GATA 3, Uroplakin and focally for MUC2 with no light chain restriction for Kappa and Lambda light chains and negative for E-Cadherin, MUC5AC, CDX2, NKX3.1 and P63. Ki-67 proliferation index was found to be 60%. Thus, a final diagnosis of Plasmacytoid variant of Urothelial carcinoma was rendered.



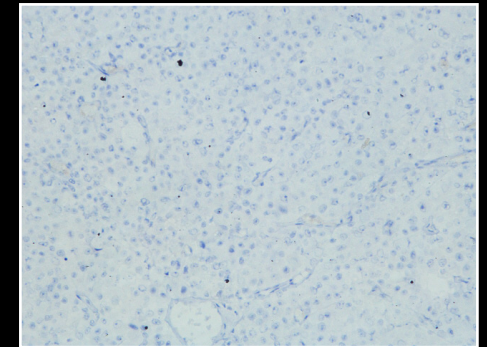
CD138



CK7



CK20



E-CADHERIN