

# CASE 018

**AUTHORS:** Shivani Sharma, DCP, DNB, Bekleswar Salona, B.tech, Mukesh Kumar, BSc, Shiv Murti Kumar, BSc, Mohit Bhardwaj, PhD, Lata Kini, MD.

**ACKNOWLEDGEMENT:** Shubham Kumar Tiwari, Shabana Praveen.

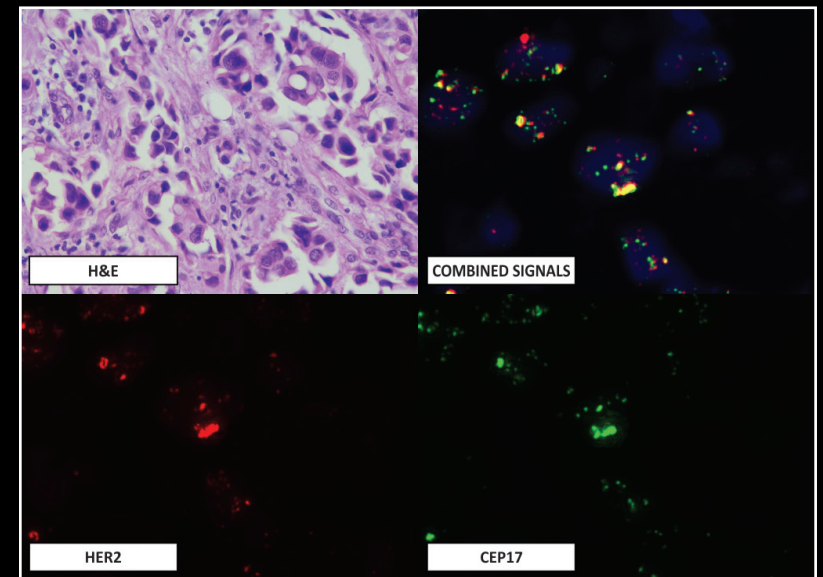
**54 year female patient with breast carcinoma, paraffin blocks received for HER2 Fluorescent in situ hybridisation (FISH) testing.**

## CLINICAL HISTORY

A 54 year female patient presented with a breast lump. Modified radical mastectomy was done and histomorphologically the tumor was consistent with an Invasive ductal carcinoma, NOS. We received the paraffin blocks of the tumor for HER2 FISH testing. H and E stained section was prepared from the block and the representative tumor was marked on the section.

## MATERIALS AND METHOD

FISH assay was performed on the Formalin fixed paraffin embedded (FFPE) tissue. Sections were prepared between 3 and 5 micron thickness on a positively charged slide (poly-l-lysine coated) to minimize the detachment of the tissue from the slide during the FISH assay. Control slides were run concurrently with the test slides to monitor the assay performance and also to assess the accuracy of signal



**Figure 1**