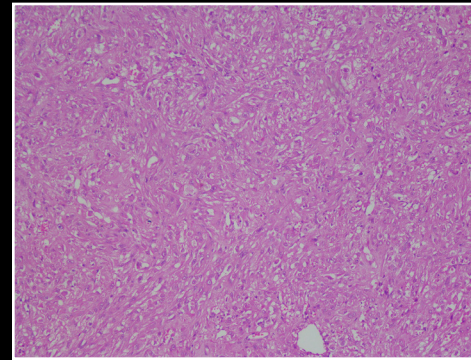
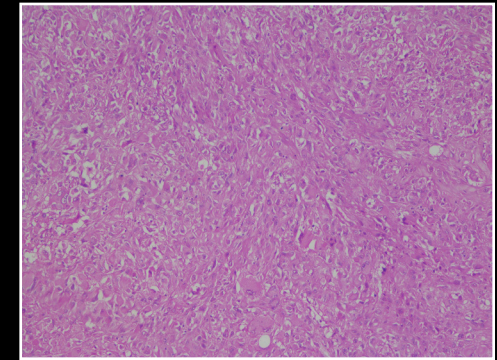


**Microscopic Features:** The H&E-stained sections on review showed a neoplasm with predominantly epithelioid histology. The tumor cells were polygonal with moderate to marked nuclear pleomorphism with moderate eosinophilic cytoplasm. The enlarged central to eccentric nuclei had vesicular chromatin and prominent nucleoli. The tumor cells were arranged in sheets with delicate fibro-vascular stroma. No areas of tumor cell necrosis or atypical mitotic figures were observed.

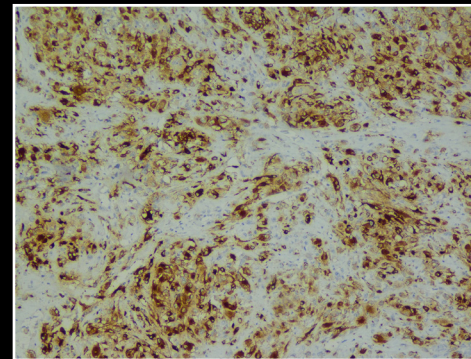
**Immunohistochemical Features:** Immunohistochemically, the neoplastic cells expressed HMB-45 and SMA in a strong and diffuse manner, and focally expressed CD117. Immunostains for desmin and panCK were negative. The Ki-67 proliferation index was up to 5%. The tumor cells depicted a melanocytic (HMB-45+) and smooth muscle (SMA+ and desmin+) differentiation, thus a final diagnosis of Uterine Perivascular epithelioid Tumor (PEComa) was rendered.



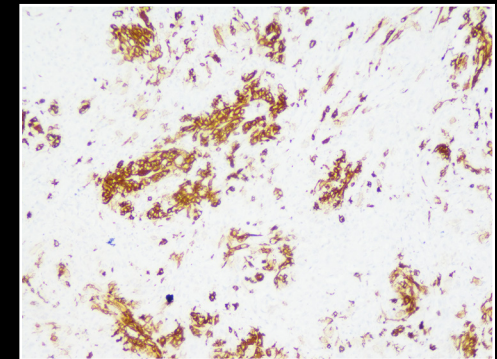
H&amp;E 10X



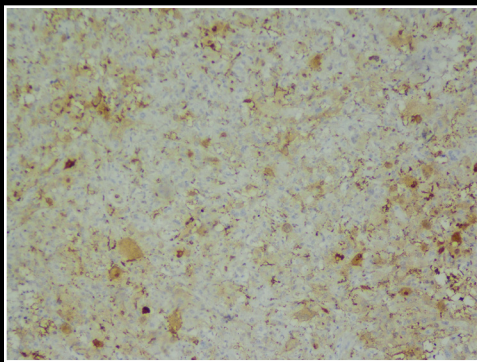
H&amp;E



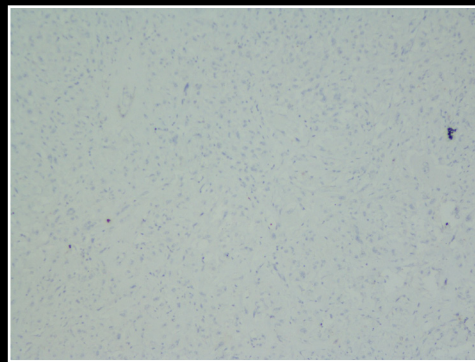
HMB45



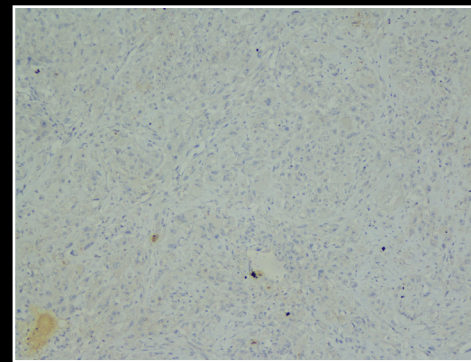
SMA



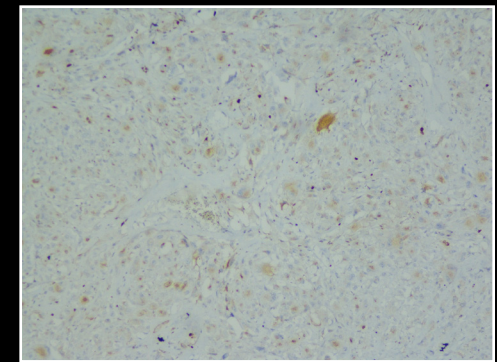
CD117



DESMIN



PanCk



Ki67