

Microscopic Features: The histologic examination of the nodule showed a moderately cellular spindle cell tumor composed of interlacing fascicles of spindle to plump cells with interspersed abundant thick walled vessels. The spindle cells were seen swirling around the vessels (Figures 2a & 2b). No hypercellularity, pleomorphism, mitotic figures, or necrosis was identified.

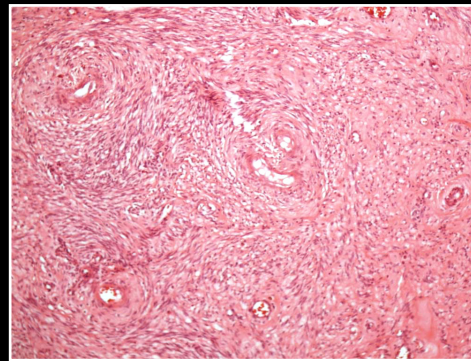


Figure 2a

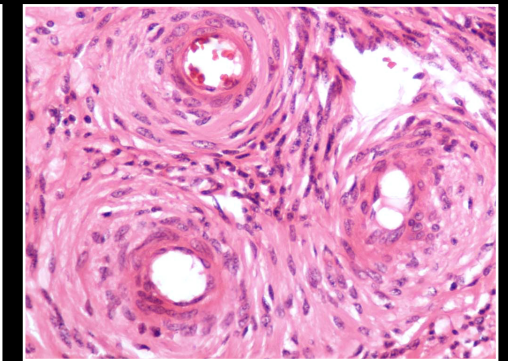


Figure 2b

Immunohistochemical Features: On immunohistochemistry, the spindle cells showed positivity for smooth muscle actin (SMA) (Figure 3a), desmin (Figure 3b) and progesterone receptor (Figure 3d). Faint focal positivity was seen in spindle cells for CD10 (Figure 3c) and estrogen receptor. CD34 was positive in the vascular endothelium and negative in the spindle cells. HMB-45 was negative. The Ki-67 labeling index was less than 1%. CD10 negativity and histologic features ruled out a endometrial stromal nodule. Similarly HMB-45 negativity argued against a perivascular epithelioid cell tumor (PECOMA).

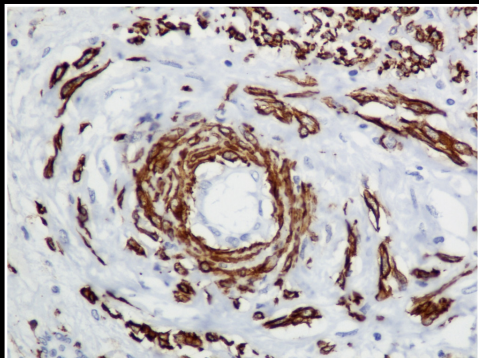


Figure 3a

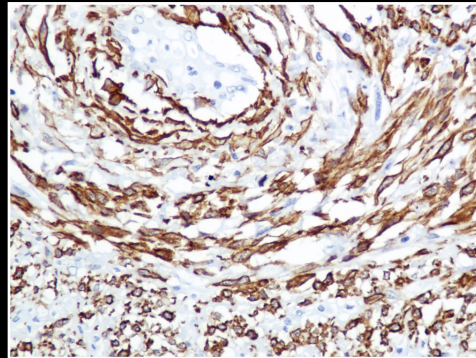


Figure 3b

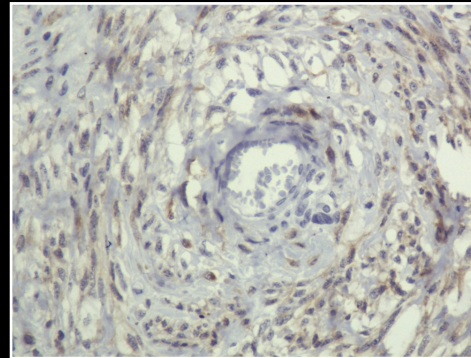


Figure 3c

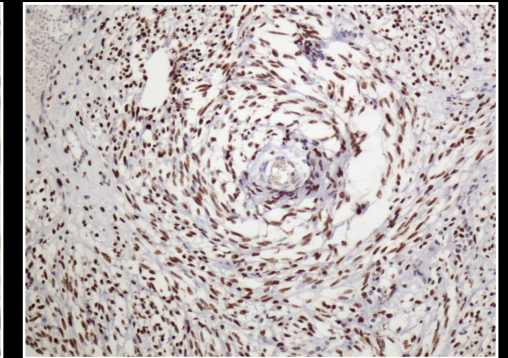


Figure 3d