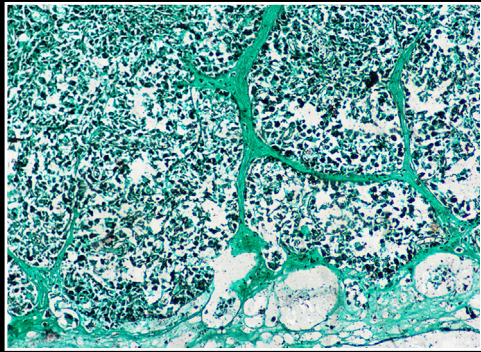
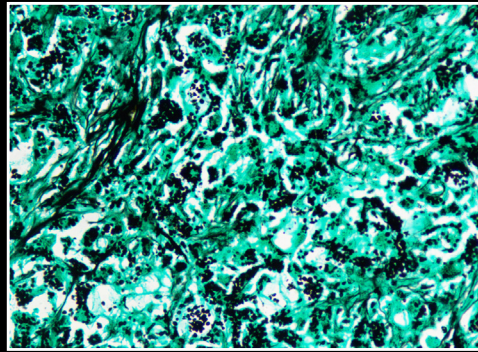


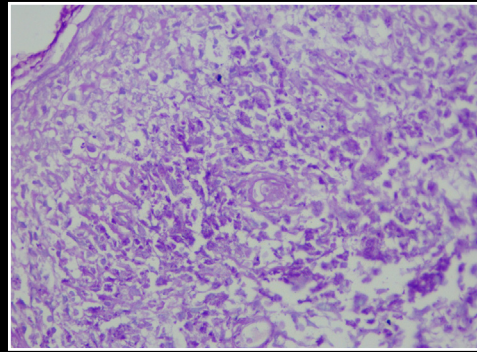
the same block revealed multiple fungal spores surrounded by a clear halo within the macrophages. Immunohistochemical stains performed to rule out malignancy revealed that the cells of interest were negative for S100, Pan cytokeratin and CD 45, and revealed positivity for CD 68. Given the histopathology, special stains and immunohistochemical stains findings, a final diagnosis of Oral Histoplasmosis was rendered.



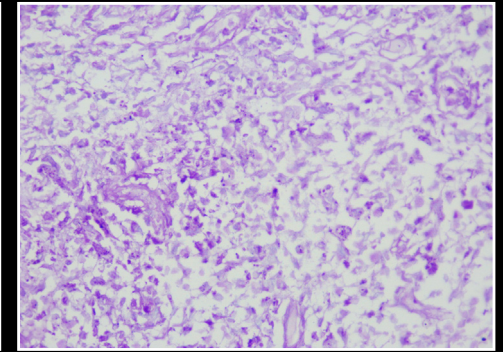
GMS, 100X



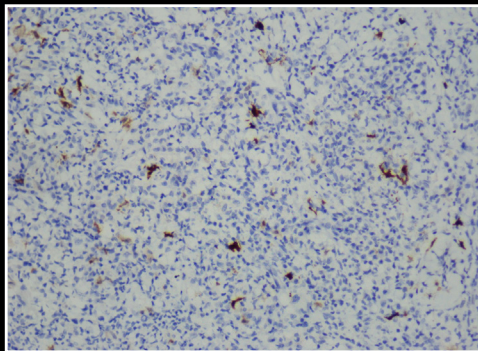
GMS, 400X



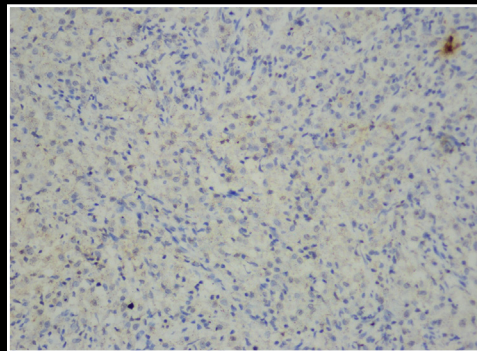
PAS, 100X



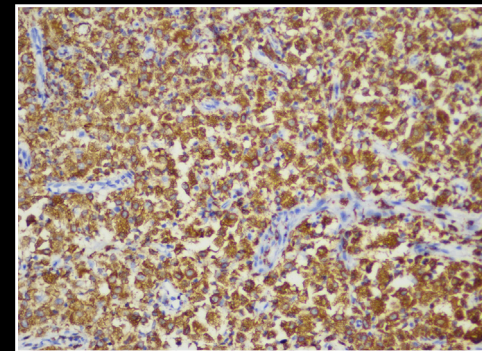
PAS, 400X



S100, 200X



PAN CK, 200X



CD68, 200X

## **FOLLOW UP**

We tried to contact the patient for follow up, but we could not as he never came back to the referring institution.