

CASE 042

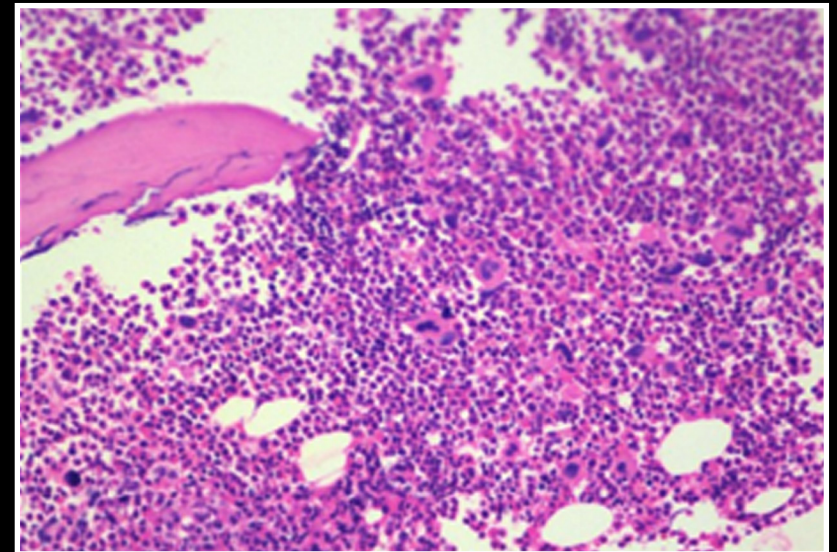
AUTHORS: Atreye Majumdar¹, Rahul Katara¹, Vineeta Raina¹, Ravi Kiran Bobba²
1 CORE Diagnostics, Gurgaon, India, 2 Ravi's American Cancer Centre, Vijayawada, India
Reviewer: Rahul Katara

Co-expression of BCR-ABL1 transcripts e19a2 (p230) and e13/14a2 (p210), a rare event in Chronic Myeloid leukemia (CML)

A 59 year old female presented with leukocytosis and splenomegaly. As the clinical impression was a diagnosis of CML, this case was referred for bone marrow assessment and BCR-ABL1 molecular assay.

HISTOLOGICAL EVALUATION

Bone marrow biopsy assessment showed granulocytic hyperplasia with cells in all stage of maturation. Eosinophils and eosinophilic precursors were prominent. Erythropoiesis was suppressed. Increased megakaryocytes with mature and few hypolobated forms were observed.



H&E