

CASE 030

EPITHELIOID GLIOBLASTOMA: A RARE HISTOLOGY WITH A NOVEL MOLECULAR BASIS

AUTHORS: Kunal Sharma DNB, Aditi Dewan MD, Udit Dewan MD, DK Vatsal MCh, Lata Kini MD

ACKNOWLEDGEMENT: Santosh Kr Pandey, Kamakhya Gogoi

35 year male patient presented with chief complaints of headache, diplopia, diminution of vision and difficulty in walking.

PAST HISTORY: Patient was operated for CSOM in 2007.

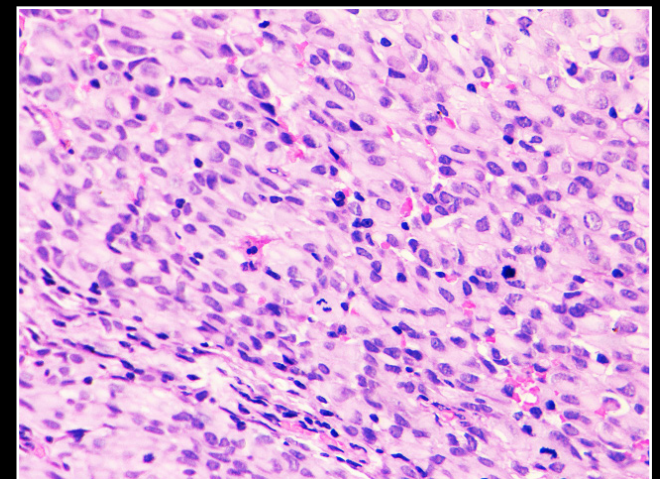
RADIOLOGIC FINDINGS

Computed tomography scan of the brain showed a right parieto-occipital space occupying lesion. Radiological findings were suggestive of a glioma vs meningioma.

The patient underwent a right parieto-occipital craniectomy with complete removal of the space occupying lesion.

GROSS TISSUE EXAMINATION

Gross revealed multiple irregular tumor tissue pieces, largest measuring 4x2.5x2cm in size and aggregating to 4x4x2.5 cm. Cut section was tan white with areas of necrosis and hemorrhage. We received paraffin blocks of biopsy from this mass for review and immunohistochemistry.



H&E