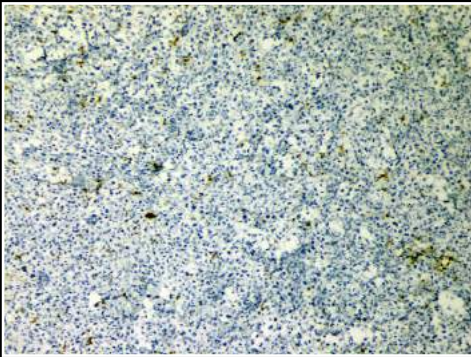
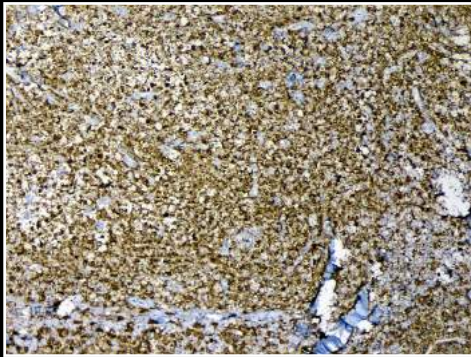


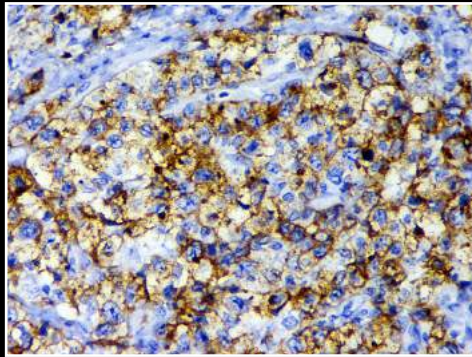
CD4



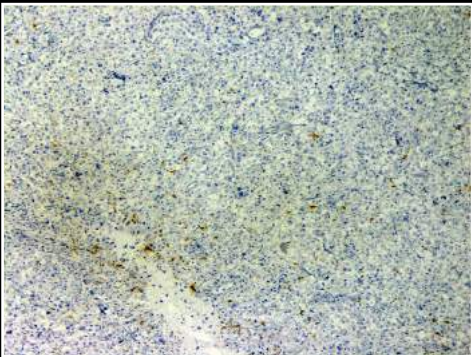
CD5



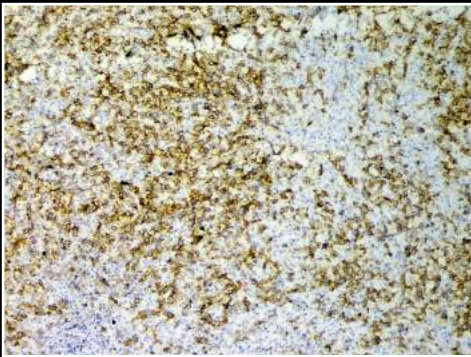
CD7



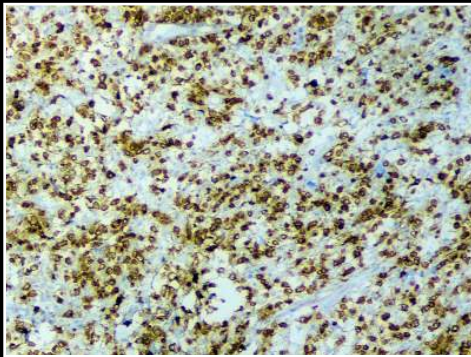
CD8



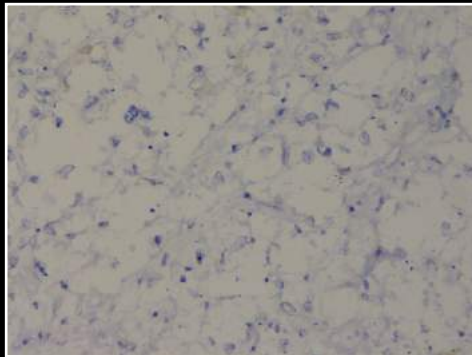
CD20



CD30



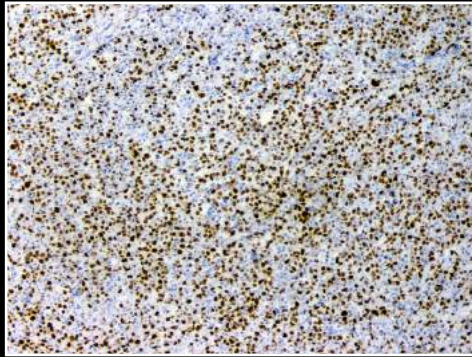
CD45



EMA

**DIAGNOSIS**

In view of the anaplastic large cell morphology and IHC staining, a diagnosis of CD8+ Primary cutaneous anaplastic large cell lymphoma (CD30+/CD8+ PC-ALCL) was rendered. Clonal TCR gene rearrangement studies were recommended for confirmation.



Ki67