

# CASE 009

**Authors:** Dr. Sambit K. Mohanty, MD, DNB, FRCPath, Dr. Shivani Sharma, DCP, DNB, FRCPath-1, Dr. Anurag Sharma, MD, Dr. Samriti Arora, MD, Dr. Anant Agasthi, MD, DM, Dr. Lata Kini, MD

**Acknowledgement:** Kamakhya Gogoi, DMLT, Vandana Sharma, MSc, DMLT

**51-year-old male with dyspepsia.**

## CLINICAL HISTORY AND IMAGING FINDINGS

The patient, a 51-year-old man, presented with dyspepsia, and an upper gastrointestinal endoscopy (Figure 1) showed a 2.4 x 2.0 cm, round, hypoechoic, and enhancing submucosal lesion in the gastric antrum causing mass effect. An endoscopic ultrasound-guided fine needle aspiration (EUS-FNA) was performed and the slides along with the cytology cell block material were submitted for pathologic assessment.

## PATHOLOGIC FEATURES

**Cytologic Features:** The EUS-FNA smears received for review showed cohesive clusters of uniform round cells with ill-defined cytoplasmic borders and scant amphophilic cytoplasm, admixed with spindle shaped endothelial cells (Figure 2). The nuclei were round with smooth nuclear membranes and evenly distributed dusty chromatin



Figure 1

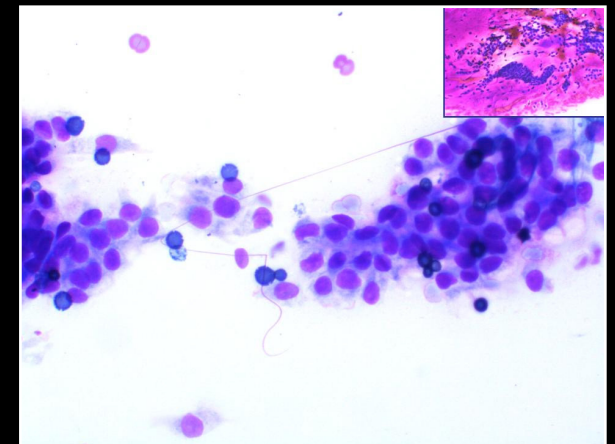


Figure 2