

CASE 008

Authors: Dr. Shivani Sharma, DCP, DNB, FRCPath-1, Dr. Anurag Sharma, MD, Kamakhya Gogoi, DMLT, Vijender Bhandari, DMLT, Vipin Chauhan, DMLT, Dr. Sambit K. Mohanty MD, FRCPath

A 34-year-old man presented with recent onset left flank pain.

CLINICAL HISTORY AND IMAGING FINDINGS

A 34-year-old man presented with recent onset left flank pain. Ultrasound examination (US) showed a 2.8 cm hyperechoic and vascular mass in the left renal cortex. A nephron-sparing surgery (partial nephrectomy) was performed and the specimen was submitted for examination.

PATHOLOGIC FEATURES

Gross Examination: It revealed a tan and well-circumscribed cortical mass with focal hemorrhage and scarring (Figure 1). The resection margin was grossly and microscopically negative for the tumor. A cytology smear preparation was obtained from the mass. The slides were fixed in 95% alcohol followed by Hematoxylin and Eosin (H&E) staining.

Cytologic Features: Microscopic examination revealed a hypercellular smear. The tumor cells were arranged in sheets without any follicular, papillary, or acinar arrangement. The most striking feature at

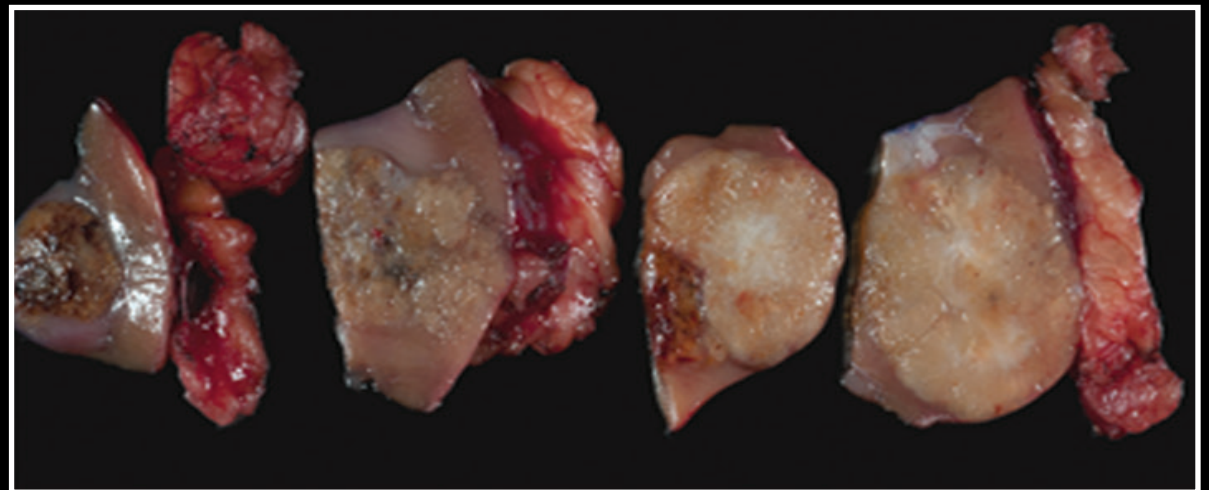


Figure 1